


**THE CASTLE ROCK  
SCHOOL**

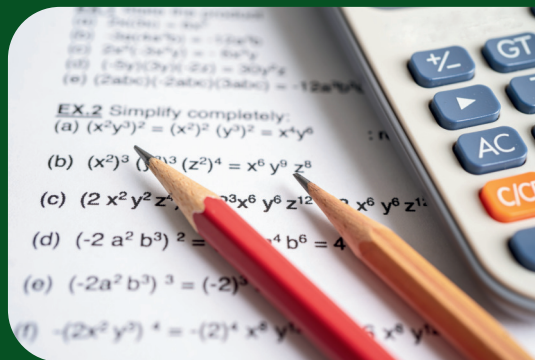
Lionheart Educational Trust

# 2026 FUTURE PATHWAYS KEY STAGE FOUR

 01530 834368

 [www.castlerock.org.uk](http://www.castlerock.org.uk)

 Meadow Lane, Coalville LE67 4BR



Dear Students,

Year 9 is the time to make important decisions regarding the courses you will specialise in. At Castle Rock we want to help you choose wisely. These selections will determine your GCSE courses starting in Year 10 and what you will be examined on in Year 11.

Choosing your subjects allows you to engage with topics at a deeper and more advanced level. This process will enhance your knowledge within these subjects, expand your subject-specific vocabulary, and cultivate excitement and enjoyment in developing specialised skills.

This booklet contains detailed information about all the courses we offer. We encourage you to discuss your options with your family, tutor, subject teachers, and school leaders.

As you consider your choices, think carefully about the subjects you excel in, the ones you enjoy, and those that may be beneficial for your future aspirations.

I wish you every success in your decision-making process.

**Roma Dhameja**

Associate Principal



**THE CASTLE ROCK  
SCHOOL**

Lionheart Educational Trust

# KEY DATES AND ADVICE

## The key dates for the options process are:

- Wednesday 7th January - Assembly for students to launch process
- Thursday 15th January - Options Evening for parents and students
- Friday 6th February - Deadline for completing online Options form
- Friday 15th May - Confirmed Option Subject Letters
- Friday 5th June - Appeal Deadline
- Friday 12th June - Option Appeal Letters sent out
- Friday 18th September - Final day for subject changes



## Advice on choosing your subjects:

- What do you want to do after Post-16?
- Use your report grades to identify your strengths
- Do not pick a subject because you work well for that teacher. It may be a different teacher taking that subject
- If you have not studied the subject at key stage 3 discuss the course in detail with the teacher and research its requirements
- Do not choose subjects just because your friends have chosen them
- Seek plenty of advice and ask lots of questions

## Important considerations for learners:

- What type of qualification will you get?
- What you will study on the course?
- What are the entry requirements?
- When are the closing dates?
- Consider the implications for career choice - what you can do after the course?





## OUR CURRICULUM

**Castle Rock's curriculum is designed to meet the needs and aspirations of our students. It consists of three main elements: core subjects, optional subjects, and essential non-accredited subjects.**

### **Core Curriculum:**

All students will follow the core curriculum, which contributes to either five or six GCSEs, depending on their choice of science course.

- Mathematics
- English Language and English Literature (two GCSEs)
- Science (The majority of students will take combined science which is the equivalent to two GCSEs)

Those students that demonstrate an aptitude for science will sit the individual science GCSEs of Biology, Chemistry and Physics worth three GCSEs. This would be recommended for any students wishing to study Science at A-Level



# OUR CURRICULUM

The Castle Rock School takes pride in providing an extensive selection of option subjects. With twenty-one subjects available, students have the opportunity to choose from a variety of pathways, each offering three types of qualifications to support their educational journey.

- **GCSEs** – Seen by many as the traditional approach to learning. Students are assessed by an exam or series of exams at the end of the course. Grades are 1 to 9.
- **Cambridge Nationals (CNAT)** – Increasingly popular vocational qualifications that are usually made up of a series of units alongside a terminal exam. Grades are Pass, Merit or Distinction at Level 1 or 2.
- **BTEC Technical Awards** – Similar to CNAT qualifications, BTEC Technical Awards are a new suite of qualifications that offer more practical learning opportunities. They are also assessed by a series of units alongside a terminal exam. Grades are Pass, Merit or Distinction at Level 1 or 2.

Students will take **four option subjects**.

- All courses on offer are equivalent to one GCSE
- All students must choose either History or Geography alongside three other choices.
- The choices are to be made online using our Options gateway
- This can be accessed via the website where there is also a guide to completing the process





**Non-accredited Subjects are compulsory for all students. They are studied throughout Key Stage 4 but are not assessed at the end of the course and do not lead to a qualification.**

The subjects are:

- Physical Education
- Religious Education
- Careers
- Personal, Social and Health Education (PHSE)
- Relationships and Sex Education (RSE)

### **Qualification Levels**

Throughout this process, subject documentation will refer to levels 1, 2 or 3. Key Stage 4 subjects will be level 1 or 2.

- Level 1 is a Foundation level course leading to grades 1 to 5
- Level 2 is a Higher-level qualification leading to grades 5 to 9

GCSE subjects are graded 1 to 9 with 9 being the highest grade. Level 3 refers to A level qualifications or equivalent.



# A TYPICAL WEEK IN YEAR 10

There are six, 50-minute lessons in a school day, attending five days, this totals 30 lessons per week. The table below shows how the 30 lessons are divided across the subjects.

1	English <ul style="list-style-type: none"><li>• Five lessons per week</li><li>• Two double lessons and one single</li></ul>	17	PE
2		18	RE
3		19	History or Geography
4	Two GCSEs <ul style="list-style-type: none"><li>• English Language</li><li>• English Literature</li></ul>	20	Three lessons per week
5		21	One double and one single
6	Maths	22	Option subject one
7		23	Three lessons per week
8	Five lessons per week	24	One double and one single
9	One double lesson and three singles	25	Option subject two
10		26	Three lessons per week
11	Science	27	One double and one single
12	Three double lessons per week	28	Option subject three
13	Combined Science - 2 GCSEs	29	Three lessons per week
14	Triple Science - 3 GCSEs <ul style="list-style-type: none"><li>• Biology</li><li>• Chemistry</li><li>• Physics</li></ul>	30	One double and one single
15			
16			



# SUBJECT BLOCKS

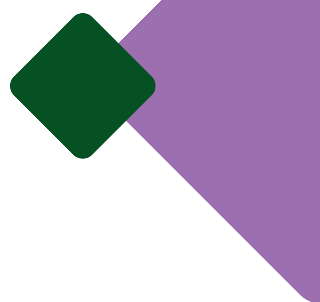
The table below shows how the subjects are in put in blocks, supporting how you choose your options.

BLOCK A	Choose one option for this block
Drama GCSE - 1 full course	Geography GCSE - 1 full course (available in other Blocks too)
Health & Social Care - Cambridge Nationals Certificate 1 & 2 (also available in Block D)	Digital Information Tech - BTEC Tech Award Level 1 & 2
Sport and Fitness - Cambridge Nationals Certificate 1 & 2 (also available in Block C)	History GCSE - 1 full course (also available in Block B)

BLOCK B	Choose one option for this block
Design Technology GCSE- 1 full course (also available in Block C)	French GCSE - 1 full course
Hospitality & Catering - Level 1 & 2 Certificate (also available in Block C)	Hairdressing & Beauty - Level 1 & 2 Certificate
History GCSE - (Also available in Block A)	Geography GCSE - 1 full course (available in other Blocks too)



# SUBJECT BLOCKS



## BLOCK C

Choose one option for this block

Art GCSE - 1 full course

Design Technology GCSE- 1 full course (also available in Block B)

Psychology GCSE - 1 full course

Religious Education GCSE - 1 full course

Statistics GCSE - 1 full course

Textiles GCSE - 1 full course

Hospitality & Catering - Level 1 & 2 Certificate (also available in Block B)

Sport and Fitness - 1 full course (also available in Block A)

## BLOCK D

Choose one option for this block

Business Studies GCSE - 1 full course

Health & Social Care - Cambridge Nationals Certificate 1 & 2 (also available in other Block A)

Creative iMedia - Cambridge Nationals Certificate 1 & 2

Music - BTECH Tech Award Level 1 & 2

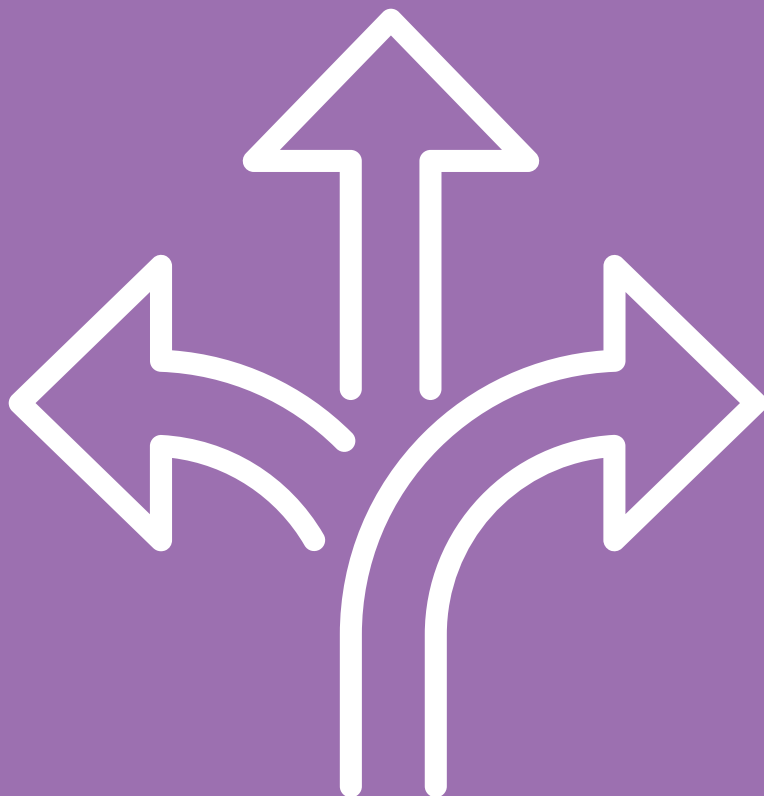
Sociology GCSE - 1 full course

Media Studies GCSE - 1 full course

Geography GCSE - 1 full course (available in other blocks too)



# LET'S FIND THE RIGHT PATHWAY FOR YOU.



## Useful links:

- [www.aqa.org.uk](http://www.aqa.org.uk)
- [qualifications.pearson.com](http://qualifications.pearson.com)
- [www.ocr.org.uk/qualifications](http://www.ocr.org.uk/qualifications)
- [www.cityandguilds.com](http://www.cityandguilds.com)
- [www.wjec.co.uk](http://www.wjec.co.uk)
- [www.eduqas.co.uk](http://www.eduqas.co.uk)



# ART

**QUALIFICATION:**  
GCSE Art and Design  
**EXAMINING BOARD:**  
Fine Art (AQA)

## Course Content and Assessment

The GCSE Course in Art and Design caters for students who are passionate about Art and enjoy using a broad range of art materials and techniques to create work that is creative and experimental.

Students will work on a range of projects that allow them to grow in independence, researching the work of others.

## Coursework:

Students create a 'portfolio' of work consisting of at least two distinct units of work which will be based on specific briefs or themes, one of which will be chosen by the student. These two coursework projects make up 60% of the GCSE grade.

## Exam:

Students respond to one starting point from the examination paper which will be issued in the January of the second year. Students have approx. twelve weeks to prepare for the final examination. The examination is a practical exam and lasts for 10 hours, this is typically carried out over two full days in school.

## Progression to Sixth Form

Students can continue to study a range of Art and Design skills in the Sixth Form via the Art, Craft and Design A Level that we offer. The Fine Art GCSE, Textiles GCSE and Design Technology GCSE options would all allow students to make progress on to this course.

## Possible Careers Associated with this Subject

TV, Film, Illustration, Graphic Design, Fashion, Set Design, Advertising, Multimedia Industries, Interior Design or Teaching.



# BUSINESS STUDIES

**QUALIFICATION:**  
GCSE Business Studies  
**EXAMINING BOARD:**  
(EDEXCEL)

## Course Content and Assessment

Business studies is an exciting and challenging subject which will introduce students to the dynamic world of business. It covers a broad range of topics that are designed to provide each individual with the knowledge and understanding that underpins modern businesses, as well as providing students with transferable skills which they will later utilise.

Students opting for GCSE Business will study the Edexcel 9-1 Specification. The course develops a detailed analysis of the different functions within Business, and is organised into two external examined themes:

### Theme 1: Investigating Small Business

Written examination: 1 hour and 45 minutes  
50% of the qualification (90 marks)

### Theme 2: Building a Business

Written examination: 1 hour and 45 minutes  
50% of the qualification (90 marks)

### Progression to Sixth Form

A business qualification can lead onto further study of Business Studies at A level. Students will also develop the transferable skills of analysis and evaluation which could support them in their future choices studying a range of other subjects.

### Possible Careers Associated with this Subject

Business analyst, Financial adviser, Business development manager, Business project manager, Customer services manager, Digital marketer, Estate agent, Retail merchandiser, Retail buyer, Sales manager, Sales, Human resources Manager, Investment analyst, Management consultant, Market researcher, Accountancy, Public relations officer or Entrepreneur.



# DIGITAL IT

## QUALIFICATION:

BTEC L1/2 Tech Award in  
Digital IT

### Course Content and Assessment

This qualification is a hands-on course that offers an insight into what it is like to work the Digital sector. Digital skills span all industries, and almost all jobs in the UK today require employees to have a good level of digital literacy. The BTEC Tech Award in Digital Information Technology provides a broad introduction to several aspects of 'digital' – from UX and interface design to data management and IT systems.

Learners will not only acquire sector-specific applied knowledge and skills but also the processes and attitudes that underpin the sector. Using realistic vocational contexts, learners will explore, develop and apply highly sought-after key skills such as data management and data protection, project planning, and the design of user interfaces and dashboards as a way to present and interpret data. They'll learn about the iterative design process, cyber security, virtual teams, codes of conduct, and legal and ethical issues.

BTEC Digital IT consists of three compulsory components. Two are internal whilst one is an externally set exam.

- **1:** Exploring User interface design principles and project planning techniques 30% (Internal PSA)
- **2:** Collecting, presenting and interpreting data. 30% (Internal PSA)
- **3:** Effective digital working practices. 40% (External synoptic exam)



# DIGITAL IT

## QUALIFICATION:

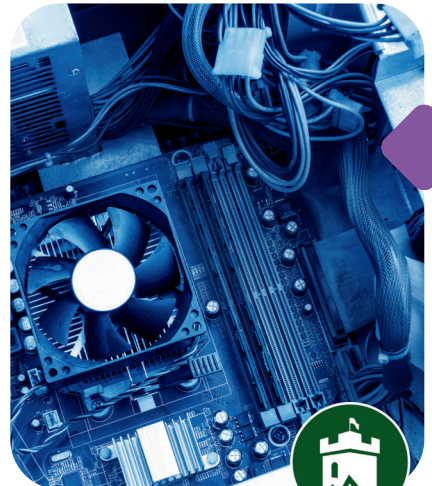
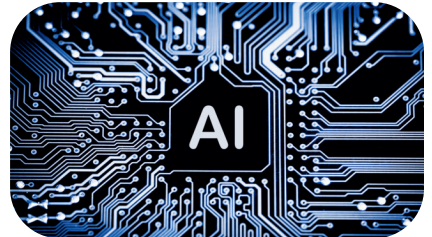
BTEC L1/2 Tech Award in Digital IT

### Progression to Sixth Form

Ideal for learners who want a career in information technology and want to get a broad taste of digital skills. This is a stepping stone to careers such as IT Project management, Technical Support and Cyber Security. BTEC Digital IT and the problem solving and IT skills it develops can be valuable in many different future study routes, including BTEC National L3 IT, A-Level Computer Science and other Level 3 courses (e.g. IT, Media Studies, Graphic Design, and Web design).

### Possible Careers Associated with this Subject

Mobile Application Development, Graphic Design, IT Support. Teacher, Game Development, Web Development and Design, Animation Development, Network Management, Cyber Security, Digital Forensics



# DESIGN AND TECHNOLOGY

**QUALIFICATION:**  
GCSE  
**EXAMINING BOARD:**  
AQA

## Course Content and Assessment

The course allows students to actively engage in Design and Technology. They are encouraged to explore the world of products and create their own.

Students are expected to conduct both primary and secondary research to understand users, enabling them to design, develop, and create products that address real-world problems. They then apply their knowledge of materials and processes, gained from theory lessons, to their practical outcomes.

The course emphasises understanding key questions in product design to cultivate thoughtful and conscientious designers. These questions include: Why do products look the way they do? What motivates people to buy products? How do products impact the environment? What are the sources of different materials, and what effects do they have on the global environment? Throughout the course, students will have the opportunity to manufacture their own prototypes

GCSE Design and Technology is assessed through a combination of written examination and coursework:

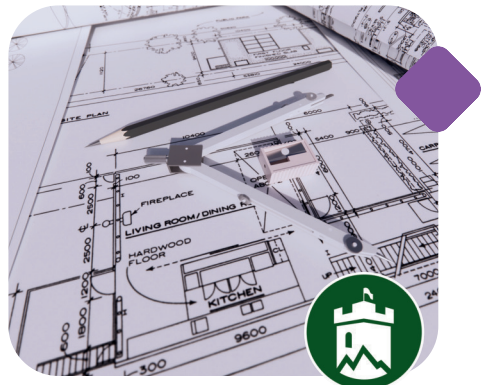
- **Paper 1:** (50% of the GCSE) 2 hours
- **Non-Examined Assessment (NEA):** (50% of the GCSE) Students will produce a working prototype and a portfolio of evidence based on a short brief from the exam board

## Progression to Sixth Form

Students can continue to study Design and Technology through Art, Craft and Design for A-Level at The Castle Rock School.

## Possible Careers Associated with this Subject

Product Designer, Architect, Engineer, Manufacturing, Builders or Electrician.



# FRENCH

**QUALIFICATION:**  
GCSE  
**EXAMINING BOARD:**  
Edexcel

## Course Content and Assessment

Students will learn to communicate in a variety of real-life situations, from booking a hotel to eating out in a restaurant, as well as deepening their knowledge of the culture and civilization of the countries where French is spoken. GCSE French places a strong emphasis on grammatical accuracy and understanding the culture of France.

Students sit four exams at the end of year 11 in listening, reading, speaking and writing. There is no coursework element to the examination.

The speaking exam will be a terminal exam conducted by the class teacher and sent to the exam board for marking.

- **Paper 1:** Listening & Understanding in French (25% of GCSE)
- **Paper 2:** Speaking in French (25% of GCSE)
- **Paper 3:** Reading & Understanding in French (25% of GCSE)
- **Paper 4:** Writing in French (25% of GCSE)

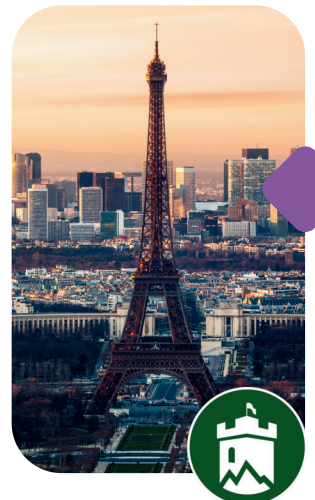
## Progression to Sixth Form

French is a highly valued academic qualification which, as an EBacc subject, will provide an ideal platform for A-Level study. Students can go on to study A-Level French.

## Possible Careers Associated with this Subject

Leisure and Tourism, Teaching and Translating, Marketing and Recruitment, Diplomatic Service / Aid Sector, Exports, Journalism, Academic Research or International Law.

Having a language qualification is a real asset and gives students an edge when applying for a job or seeking promotion within their chosen career.



# GEOGRAPHY

**QUALIFICATION:**  
GCSE  
**EXAMINING BOARD:**  
OCR B



## Course Content and Assessment

GCSE Geography enables students to develop their geographical skills alongside investigative, mathematic and statistic skills. Fieldwork will be carried out as part of the course, and this will feed in to the written exams.

Key topics within the specification include:

Global Hazards, Changing Climate, Distinctive Landscapes, Sustaining Ecosystems, Urban Futures, Dynamic Development, UK in the 21st Century Resource Reliance

The course is assessed through three exam papers:

- **Paper 1:** Our Natural World (35% of GCSE) 1 hr 15 minutes
- **Paper 2:** People and Society (35% of GCSE) 1 hr 15 minutes
- **Paper 3:** Geographical Exploration (30% of GCSE) 1 hr 30 minutes

## Progression to Sixth Form

Geography is a highly valued academic qualification which, as an EBacc subject, will provide an ideal platform for A-Level study in a wide range of subjects, including A Level Geography.

## Possible Careers Associated with this Subject

Local Government, Environmental Consultants, Accountant, Meteorologist, Geologist, Scientist, Logistics, Town Planner, Ministry of Defence - Analysts, Climatologist, Teaching, Police - Intelligence Analysis, Civil Service, GIS Analysts or Digital Cartography.



# HAIR & BEAUTY

## QUALIFICATION:

City and Guilds - L2 Technical  
Award: Hair and Beauty Studies  
(3038 - 21)

### Course Content and Assessment

This qualification allows students to explore the exciting world of hair and beauty and the environment in which its industries operate. Students will look back in time to explore changing trends and developments within the hair and beauty sector, find out how science is used to create products, and understand why we create images for business use.

Students will develop hair styling, make-up and manicure technical skills to produce their own recreations of the looks and photographic images. A programme of basic practical hair and beauty skills will be followed consisting of: shampooing, blow-drying, thermal styling, hair up, skin care, make up application and nail art. You will explore ethics of product testing, the anatomy of the hair, skin and nails and explore how disorders of the hair and skin can affect services.

This qualification has three units and one Assessment:

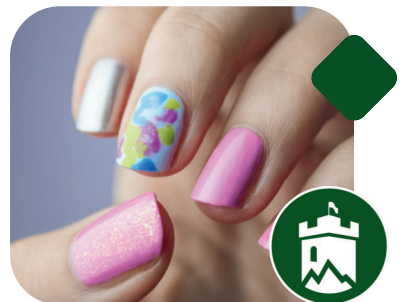
- **Unit 1:** Exploring the world of hair and beauty
- **Unit 2:** Science of hair and beauty
- **Unit 3:** Design in the hair and beauty sector
- **Assessment:** One externally set assignment and one externally set exam

### Progression to Sixth Form

Students can progress onto Level 2 or Level 3 City and Guilds qualifications.

### Possible Careers Associated with this Subject

Make-Up Artist, Beautician,  
Hairdresser, Nail Technician,  
Salon or Spa Manager.



# HEALTH AND SOCIAL CARE

**QUALIFICATION:**  
OCR Level 1 / 2 Cambridge  
National in Health and Social Care

## Course Content and Assessment

Offering an effective introduction to the health and social care sector, this qualification looks at the role the sector plays in the health, well-being and care of individuals. It also introduces students to knowledge and skills needed to work in various care settings. Underpinning the qualification is a focus on person-centered values, rights of individuals, communicating effectively and protecting individuals. In addition, students will focus on supporting individuals through life events and the option to plan and deliver a creative activity.

The qualification is designed to help students learn practical skills that can be applied to real-life contexts and work situations, to think creatively, analytically, logically and critically. Develop independence and confidence in using skills that would be relevant to the health and social care sector and more widely.

The Cambridge National Certificate in Health and Social Care consists of three units:

- **Unit 1:** Principles of care in health and social care settings – externally assessed unit (40%)
- **Unit 2:** Supporting individuals through life events – internally assessed unit (30%)
- **Unit 3:** Creative and therapeutic activities – internally assessed unit (30%)

## Progression to Sixth Form

The qualification can lead to further study in a variety of health and social care industries and occupations: Health and Social Care, Child care, Diploma in Education and Early Years Services.

## Possible Careers Associated with this Subject

Counsellor, Social Worker, Case Worker, National Health Service, Nurse, Charity Officer, Nursery Nurse, Residential Care or Paramedic.



# HISTORY

**QUALIFICATION:**  
GCSE History  
**EXAMINING BOARD:**  
Pearson – Edexcel



## Course Content and Assessment

GCSE History enables students to develop analytical, evaluation and debating skills, whilst gaining confidence in interpreting source materials and interpretations.

### Key topics within the specification include:

- Medicine through time c1250 - present, including the historic environment of the British sector of the trenches on the Western Front, 1914-18.
- Early Elizabethan England 1558-88
- Superpower relations and the Cold War 1941-91
- Weimar and Nazi Germany 1918-39

The course is assessed through three exam papers:

- **Paper 1** (30% of the GCSE) 1 hour 15 minutes
- **Paper 2** (40% of the GCSE) 1 hour 45 minutes
- **Paper 3** (30% of the GCSE) 1 hour 20 minutes

## Progression to Sixth Form

A Level history is offered by our 6th Form and is one of our most successful subjects.

## Possible Careers Associated with this Subject

A qualification in history is valuable in any career that requires an understanding of the world we live in and the past that has shaped it. Some examples include: Journalism, Broadcast Media, Publishing, Teaching, International Relations, Politics, Sales and Marketing, Law, Human Resources, Television and film or the Civil Service.



# HOSPITALITY AND CATERING

## QUALIFICATION:

Level 2 Hospitality and Catering (WJEC)



## Course Content and Assessment

This is an exciting and creative course which focuses on practical cooking skills to ensure students develop a thorough understanding of nutrition, food safety and the hospitality and catering industry.

Year 10: Students' cookery skills will be nurtured with an emphasis on developing high level practical skills shown through a range of dishes. They will explore nutrition through theory related to practical lessons and undertake a range of practical lessons utilising a range of equipment and processes. They will develop a strong understanding of nutrition and food choice alongside food safety. Practice assessments will ensure students are prepared for Year 11.

Year 11: Students will work through the non-examined assessment tasks and preparation for the written exam. There will be some opportunity for further development of high-level practical skills.

**Written Exam** (1 hour 20 minutes) 80 marks - 40% of qualification The Hospitality and Catering Industry Unit 1

**Non-exam assessment (NEA)** Controlled assessment (approximately 12 hours) 120 marks - 60% of qualification Hospitality and Catering in Action Unit 2 enables learners to develop and apply knowledge and understanding of the importance of nutrition and how to plan nutritious menus. They will learn how to prepare, cook, present dishes and how to review their work effectively. An assignment brief will be provided by WJEC which will include a scenario and several tasks available.



# HOSPITALITY AND CATERING

## QUALIFICATION:

Level 2 Hospitality and Catering (WJEC)

### Progression to Sixth Form

The qualification can lead to further study at A-Level or can enable students to embark on apprenticeships in the catering and food industries.

### Possible Careers Associated with this Subject

Restaurant Manager, Chef, Food Journalism, Dietician, Community Health Worker, Environmental Health Officer, Personal Trainer, Nutritionist



# iMEDIA

## QUALIFICATION:

This is a Vocational Qualification.  
For more information visit: [Level 2 Hospitality and Catering \(WJEC\)](#)



## Course Content and Assessment

This qualification will provide students with essential knowledge, transferable skills and tools with the aims of enhancing their employability when they leave education. Taking iMedia will encourage independence, creativity and awareness of the digital media sector.

This will allow learners to apply fundamental principles and concepts of digital media such as (video games, online publishing e.g. websites, books, interactive media etc). The course will focus on product design the use of media, planning techniques and creation, publishing and distribution considerations.

The course is split into three modules:

**1 - Creative iMedia in the media industry.** Assessed by exam. You will learn about the media industry, digital media products, how they are planned, and the media codes which are used to convey meaning, create impact and engage audiences.

**2 - Visual identity and digital graphics.** Assessed by coursework. You will learn to develop visual identities for clients and use the concepts of graphic design to create original digital graphics to engage target audiences.

**3 is known as Interactive Digital Media.** Assessed by coursework. You will learn how to plan, create and review interactive digital media.

## Progression to Sixth Form

Students wishing to go to Sixth Form/College will be able to use their ICT skills to assist whichever course they pursue. Students going into Apprenticeships will clearly be able to show employers and trainers the level of their ICT competence using a recognised qualification, especially in the areas covered by the modules outlined above.

## Possible Careers Associated with this Subject

Website Designer, Games Designer, Digital Assistants, Social Media Specialists, Animators, Creative Directors, Photo Editors or Film Editor



# MEDIA STUDIES

**QUALIFICATION:**

Edexcel

## **Course Content and Assessment**

GCSE Media Studies engages students in the in-depth study of media products in relation to the four areas of the theoretical framework including: media language, media representation, media industries and media audiences.

Students are required to study media products from all of the following media forms: television, film, radio, newspapers, magazines, advertising and marketing, online, social and participatory media, video games and music videos.

- Two written exams of 1 hour 30 minutes each (35% each)
- Non-exam Assessment – Creating a Media Project (30%) based on one of five annually changing briefs, set by Edexcel worth 60 marks. Assessed by teachers, moderated by Edexcel.

## **Progression to Sixth Form**

Media can be studied further in 6th form but will also provide the skills for other courses as aspects of Sociology, Politics, Business and History run throughout the course.

## **Possible Careers Associated with this Subject**

Film-making, Magazines, Photography or Advertising.



# MUSIC

**QUALIFICATION:**

Edexcel

## Course Content and Assessment

BTEC Music is suitable for students who have demonstrated a level of enthusiasm, motivation and dedication in Music. All students are expected to play an active role in the musical life of the school. The course allows students to choose to develop their performance, production or composing skills.

For each component, students will build a portfolio of evidence through research, assignments and practical tasks. These are verified by an exam board moderator. The course is 100% coursework.

**1: Exploring Musical Products and Styles** – Learners will explore through a series of practical workshops the techniques used in the creation of different musical products and investigate the key features of different musical styles.



**2: Music Skills Development** – Learners will develop two musical disciplines of their choice— live performance, production or composing—through engagement in practical tasks, whilst documenting their progress.



**3: Responding to a Music Brief (Externally moderated)** – Learners will develop and present music in response to a given brief, where they will create a performance or produce a sequence using a DAW of a given song in a new style.



## Progression to Sixth Form

Following study of either BTEC/GCSE Music or BTEC Performing arts – both course pathways provide a solid foundation for studying these subjects further.



## Possible Careers Associated with this Subject

Music producer, Music therapist, Performer, Sound designer, Sound technician, Broadcasting/film/video, Arts administrator, Community arts worker, Event manager, Marketing, Private tutor, Radio producer Talent agent, Music management or Legal work within the music industry.



# PSYCHOLOGY

**QUALIFICATION:**  
AQA GCSE Psychology

## Course Content and Assessment

Topics:

- Development- How did you develop?
- Memory- How does your memory work?
- The brain and neuropsychology- How does your brain affect you?
- Social Influence- How do others affect you?
- Psychological Problems- How would Psychological Problems affect you?
- Criminal Psychology- Why do people become criminals?
- Sleep and Dreaming- Why do you need to sleep and dream?
- Research Methods- How do you carry out psychological research?

Assessment:

2 exam papers:

**Paper 1** - 98 marks 1 hr 45mins

**Paper 2** - 79 marks 1 hr 20 mins

## Progression to Sixth Form

Psychology is an incredibly popular subject at A level. Students who have studied GCSE Psychology beforehand get a head start and do well but many students also take the subject up at A Level having not taken it at GCSE. We also have increasing numbers choosing to study psychology based subjects at university.

## Possible Careers Associated with this Subject

Psychiatry, Educational Psychology, Forensic Psychology, Health Psychology, Clinical Psychology, Counselling Psychology, Nursing, Teaching Social Work, Police, Armed Forces, Media and Broadcasting, Advertising, Sales Marketing, Law Nursery Nursing or Medicine Retail.



# RELIGIOUS STUDIES

## PHILOSOPHY & ETHICS

**QUALIFICATION:**  
GCSE Religious Studies (Eduqas)



### Course Content and Assessment

**Component 1:** Religious, Philosophical and Ethical Studies in the Modern World.(Written examination: 2 hours - 50% of qualification)

- Theme 1: Issues of Relationships
- Theme 2: Issues of Life and Death
- Theme 3: Issues of Good and Evil
- Theme 4: Issues of Human Rights

**Component 2:** Study of Christianity (Written examination: 1 hour - 25% of qualification)

**Component 3:** Study of Buddhism (Written examination: 1 hour - 25% of qualification)

### Progression to Sixth Form

A-level Philosophy; A-level Religious Studies (Philosophy and Ethics) Related subjects include health and social care, geography, law, history, classical civilisation, sociology, philosophy, psychology, government and politics, communication and culture.

### Possible Careers Associated with this Subject

A qualification in RS / Philosophy and Ethics is valuable in any career that requires an understanding of people and an appreciation of the diverse world we live in. Some examples include: Law, Medicine, Social , Youth work, Retail, Hospitality, Business, HR, Journalism, Teaching, Education, Public Services or Marketing



# SOCIOLOGY

QUALIFICATION:  
EDUQAS/WJEC GCSE

## Course Content and Assessment

GCSE Sociology helps students to gain knowledge and understanding of key social structures, processes and issues through the study of families, education, crime and deviance and social stratification.

Students will develop their analytical, assimilation and communication skills by comparing and contrasting perspectives on a variety of social issues, constructing reasoned arguments, making substantiated judgements and drawing reasoned conclusions.

By studying sociology, students will develop transferable skills including how to:

- investigate facts and debate social issues
- develop opinions and new ideas on social issues
- analyse and better understand the social world

The course is assessed with two written papers at the end of the course, each contributing 50% of the grade. Each paper lasts 1 hour 45 mins.

## Progression to Sixth Form

A Level Sociology is offered by our 6th Form and is one of our most popular and successful subjects.

## Possible Careers Associated with this Subject

Crime analyst, Lawyer, Paralegal, Journalism, Police officer, Probation officer, Domestic violence victim advocate, Social service case worker, Teacher, or working with Local / national government.



# SPORTS

## QUALIFICATION:

ELevel 1 / 2 Cambridge National Certificate in Sport Studies (OCR)



## Course Content and Assessment

This aim of this course is to encourage students to think for themselves about the study of sport and the application to real life practical sport, leadership and evaluation of the skills required. Students will study topics affecting sport through the contemporary issues' unit, both play and lead sporting activities, as well as having the chance to either explore the world of outdoor sport or sport in the media.

### Students must complete three units:

1. One mandatory externally assessed unit (exam)
2. One mandatory centre-assessed unit (NEA) - 80 marks
3. One optional centre-assessed unit (NEA) from a choice of two - 40 marks
  - R184: Contemporary Issues in Sport - EXAM
  - R185: Performance and Leadership in Sports Activities - MANDATORY
  - R186: Sport and the media OPTIONAL
  - R187: Increasing awareness of outdoor and adventurous activities

OPTIONAL - this involves a trip to Leicester Outdoor Pursuits Centre at the end of year 10. This does come at a cost, however as a PE department and school we will subsidise as much as possible.

### Progression to Sixth Form

Students can continue to study sports or go into an industry apprenticeship. This course allows study to go on to a wide range of post 16 options, one being the CTEC Level 3 Sports and Physical Activity Course.

### Possible Careers Associated with this Subject

Armed Forces, Physiotherapist, Police, Fire Service, Coach, Athlete, Personal Trainer or Nutritionist.



# STATISTICS

**QUALIFICATION:**  
Edexcel GCSE

## Course Content and Assessment

Statistics is a course targeted at those students with a secure understanding of mathematics; there is an overlap with the GCSE Mathematics syllabus which will benefit both courses. Statistics are everywhere and this course gives students the opportunity to scrutinise and assess the reliability of statistics, applying Statistics to real world issues. Students taking GCSE Statistics will also gain an advantage in other subjects that require statistical analysis, such as Science, Geography, Social Sciences, Business Studies and PE, due to the vast cross curricula links.

The course is assessed with two written papers at the end of the course, each contributing 50% of the grade. Each paper lasts 1 hour 30 mins.

## Progression to Sixth Form

GCSE Statistics feeds into many A Level courses including Maths, Further Maths, Geography and the Sciences.

## Possible Careers Associated with this Subject

Agriculture, Computer Science, Health Science, Pharmaceutical, Data analyst, Data scientist, Financial risk analyst, Investment analyst or Market researcher.



# TEXTILES

**QUALIFICATION:**  
GCSE Art & Design (Textile Design)  
**EXAMINING BOARD:**  
AQA

## Course Content and Assessment

### Unit 1: Portfolio of Coursework = 60%

The GCSE Course in Art and Design caters for students of all abilities but is particularly suitable for students who have demonstrated an ability for and enjoy art and design. Students create a 'portfolio' of work which is an extended collection of coursework consisting of at least two distinct units of work which will be based on specific briefs or themes, one of which will be chosen by the student.

### Unit 2: Practical Examination unit = 40%

Students respond to one starting point from the examination paper which will be issued in the January of the second year. Students have twelve weeks to prepare for the final examination.

Students respond to the project brief or theme by:

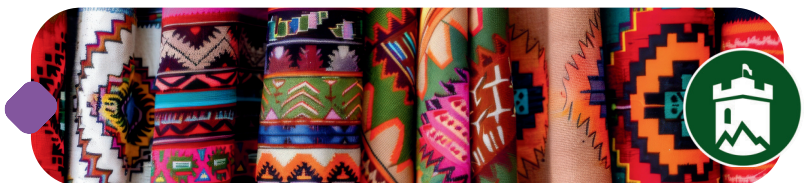
- Researching by gathering images through drawing, photography and textile samples.
- Developing ideas by experimenting with textile media, textile techniques and design work.
- Critical & Contextual, studying the work of textile and fashion designers from around the world to influence and inform students' development.
- Realisation creating final outcome(s) as a fashion garment or creative textile.

## Progression to Sixth Form

Students can continue to study a range of Art and Design skills in the Sixth Form via the Art, Craft and Design A Level that we offer. The Textiles GCSE option would all allow students to make progress on to this course.

## Possible Careers Associated with this Subject

Interior Design, Costume Design, Fashion Design, Textiles Industry, Theatre Design, Fashion Buying, Fashion Merchandising, Clothing Design or Teaching.





## FREQUENTLY ASKED QUESTIONS

**Can I choose the same subject twice?** No, the system should not allow this to happen as you can only receive one award per subject.

**I want to do two subjects in the same box?** Unfortunately, that is not possible and you will have to make a choice. Students will take one subject per box.

**What happens if I miss the deadline?** Try not to, as this will may mean that you will not receive the subjects that you want. The classes may already be full.

**I don't want to do any of the subjects in box B.** Unfortunately, you will need to pick one, as you cannot have blanks on your timetable. Start by giving each subject in the box a score out of 5 and rank the subjects against each other.

**What are core subjects?** These are the subjects that all students must study. They consist of English, Maths and Science, in addition to several non-accredited subjects.





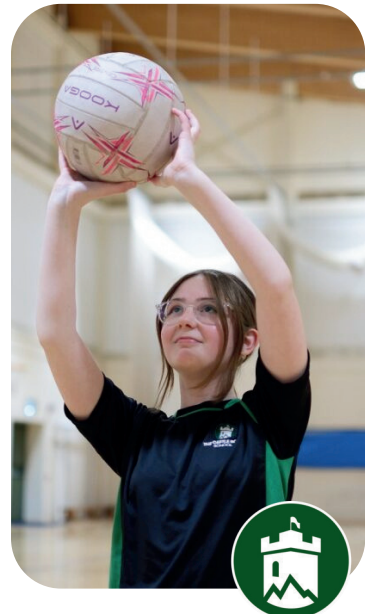
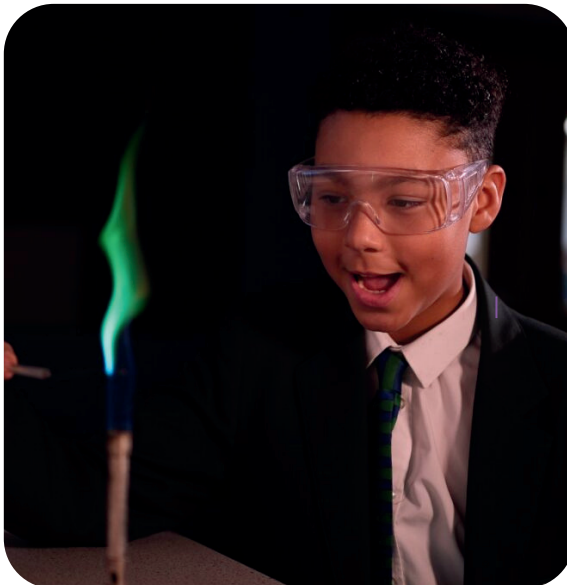
# FREQUENTLY ASKED QUESTIONS

**Will I get all of my first choices?** Hopefully but realistically not all students will. There are over 180 students in the year group and some subjects may only have 20 places so it depends on how popular they are.

**Do any subjects take up more than one choice?** No, all of the subjects are single award.

**Do any subjects have entry requirements?** Yes. Please Read the Options booklet carefully as several subjects require a high level of numeracy or literacy.

**If I have a question, who do I contact?** If it is about a subject, contact the subject teacher directly. If it is a question about the process, contact Mr Cooling via email [phil.cooling@castlerock.org.uk](mailto:phil.cooling@castlerock.org.uk)





**THE CASTLE ROCK  
SCHOOL**

Lionheart Educational Trust