



# THE CASTLE ROCK SCHOOL

Lionheart Educational Trust

# Welcome





We have an exciting  
journey ahead of us!



# Guiding Principles



- Each one of us aspires to be the best we can be
- Passionate restlessness
- Courage
- Kindness
- Responsibility



# YOUR JOURNEY AT CASTLE ROCK SCHOOL WILL INCLUDE:



- A new look school
- Passionate staff with a rigorous curriculum
- Careers guidance to help you plan next steps
- The opportunity to be our voice



# WE ARE WELL ON OUR WAY!



OFSTED 2021	OFSTED 2022	Focus for the coming year
Inadequate in all categories	Good in all categories Requires improvement in Quality in Education	In classroom experience Parent Engagement Excellent, rounded, education to offer the best life chances for young people in our area

# BUT WE NEED YOU!

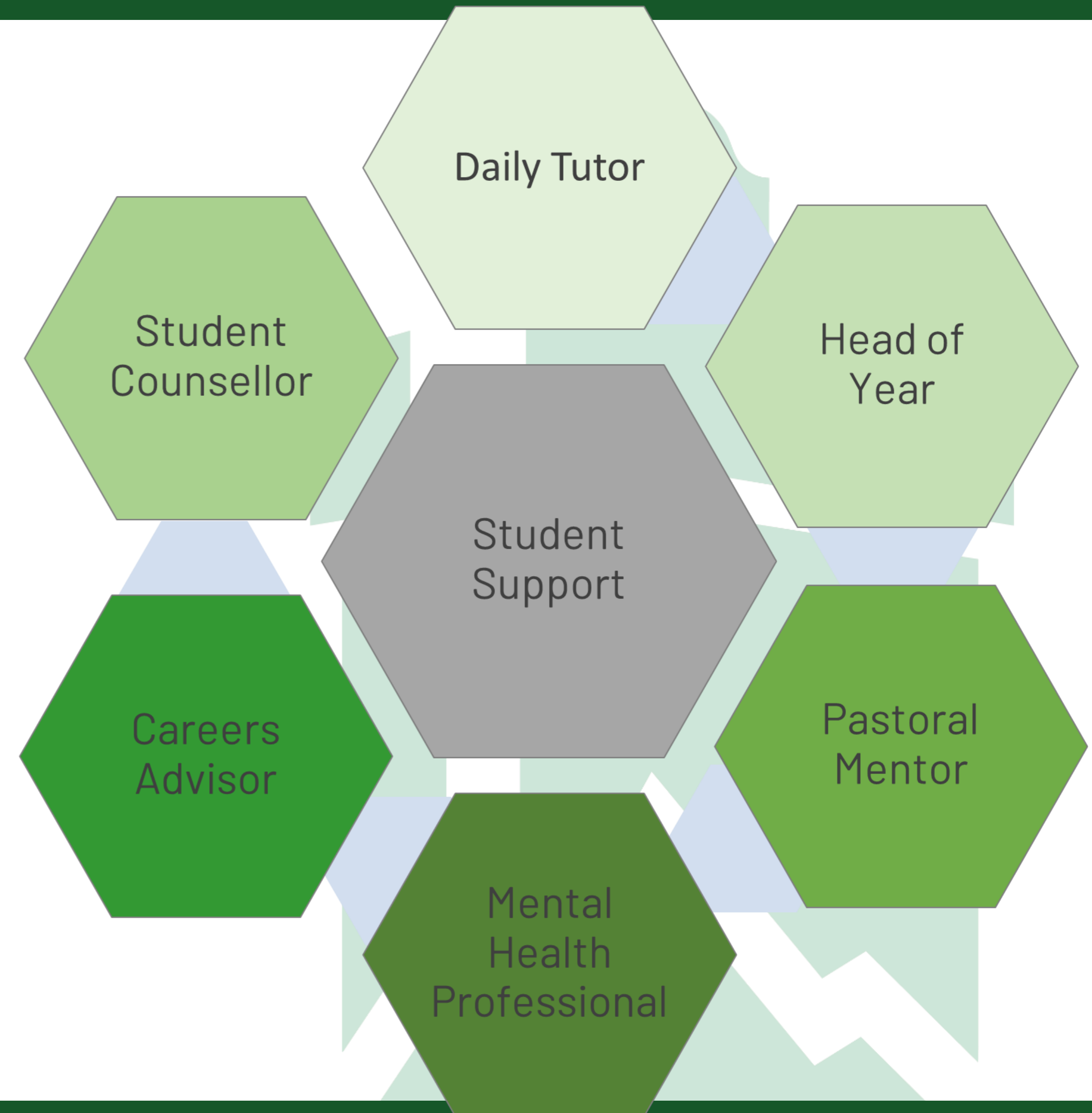


PUPIL CENTRED, POSITIVE AND PROFESSIONAL

# CONTACT - LADDER



1. Tutor
2. Pastoral Mentor
3. Head of Year (Miss Brady)
4. Senior Leadership Team (SLT) Link





# UNIFORM



Mandatory items:

- Grey trousers, grey tailored shorts, grey pinafore, grey pleated skirt or checked skirt
- School tie
- Green Castle Rock blazer
- White shirt
- All black footwear
- Black tights/socks
- Optional - plain grey knit V neck jumper under blazer





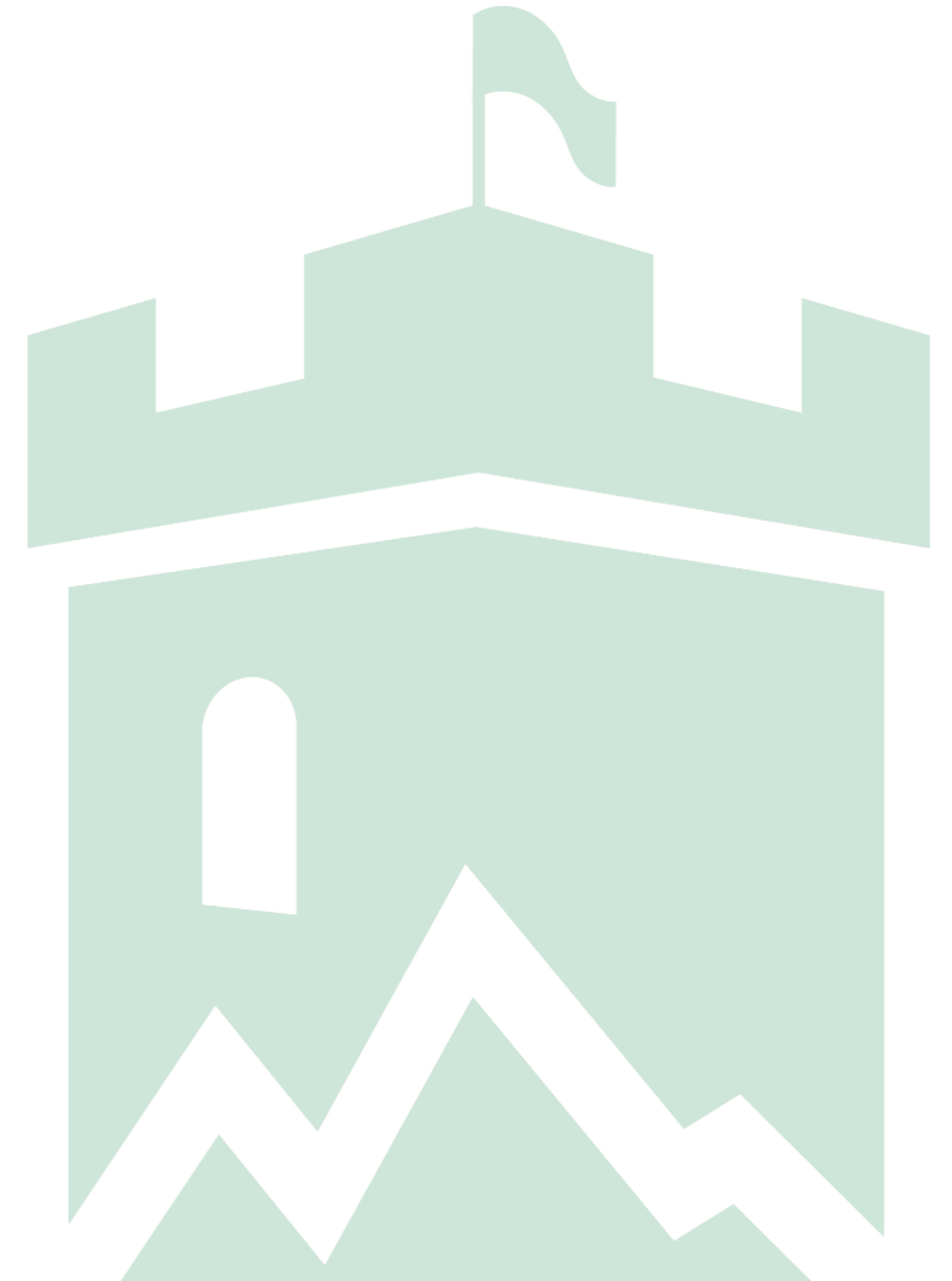


- Mandatory - PE T-shirt
- Mandatory - PE Midlayer
- Black shorts, leggings or tracksuit bottoms (minimum logos)
- Black socks
- Trainers – any colour



**Chilwell Shop**  
**Summer Opening Hours**  
Monday – Saturday  
9:00am – 5:00pm

**Winter Opening Hours**  
Mon, Wed, Fri, Sat  
9:30am – 4:30pm



# UNIFORM PURCHASING



- School tie, blazer and checked skirt can all be purchased from our nominated uniform provider. Along with the PE t-shirt and midlayer.
- Our provider is 'Schoolwear Solutions'.
- A uniform trying on event will also be held at the school on 13th June.
- Saturday 13th July – Uniform Pop Up Shop – Book your slot. Try on. Purchase. Take home with you that day!
- Saturday 20th July – Recommended last date for online orders for delivery before the start of school term.
- All other uniform can be purchased from a variety of retailers.

## **Second Hand Uniform:**

- We encourage all parents to donate any unwanted uniform to the YMCA Charity Shop.

YMCA Charity Shop  
5-7 Belvoir Shopping Centre  
Coalville  
LE67 3XE

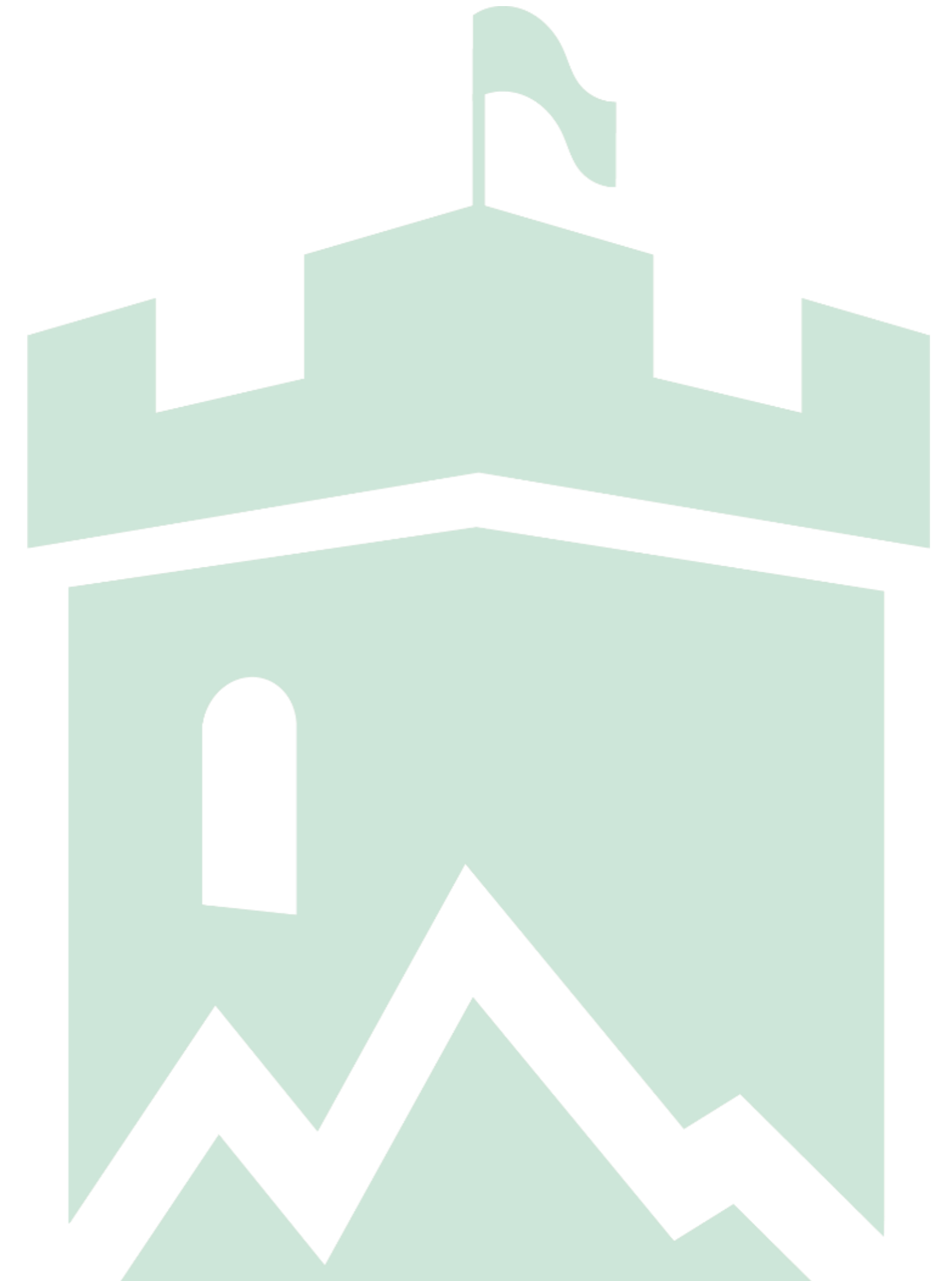
# TIMES OF THE SCHOOL DAY



## SCHOOL DAY

Tutor	8.40am - 9.10am
Period 1	9.10am - 10.00am
Period 2	10.00am - 10.50am
Break	10.50am - 11.10am
Period 3	11.10am - 12.00pm
Period 4	12.00pm - 12.50pm
Lunch	12.50pm - 1.20pm
Period 5	1.20pm - 2.10pm
Period 6	2.10pm - 3.00pm
Staggered finish times	
Year 7 & 8	2.55pm
Year 9 & 10	3.00pm
Year 11 & Sixth Form	3.05pm

Total: 31.25 hours per week



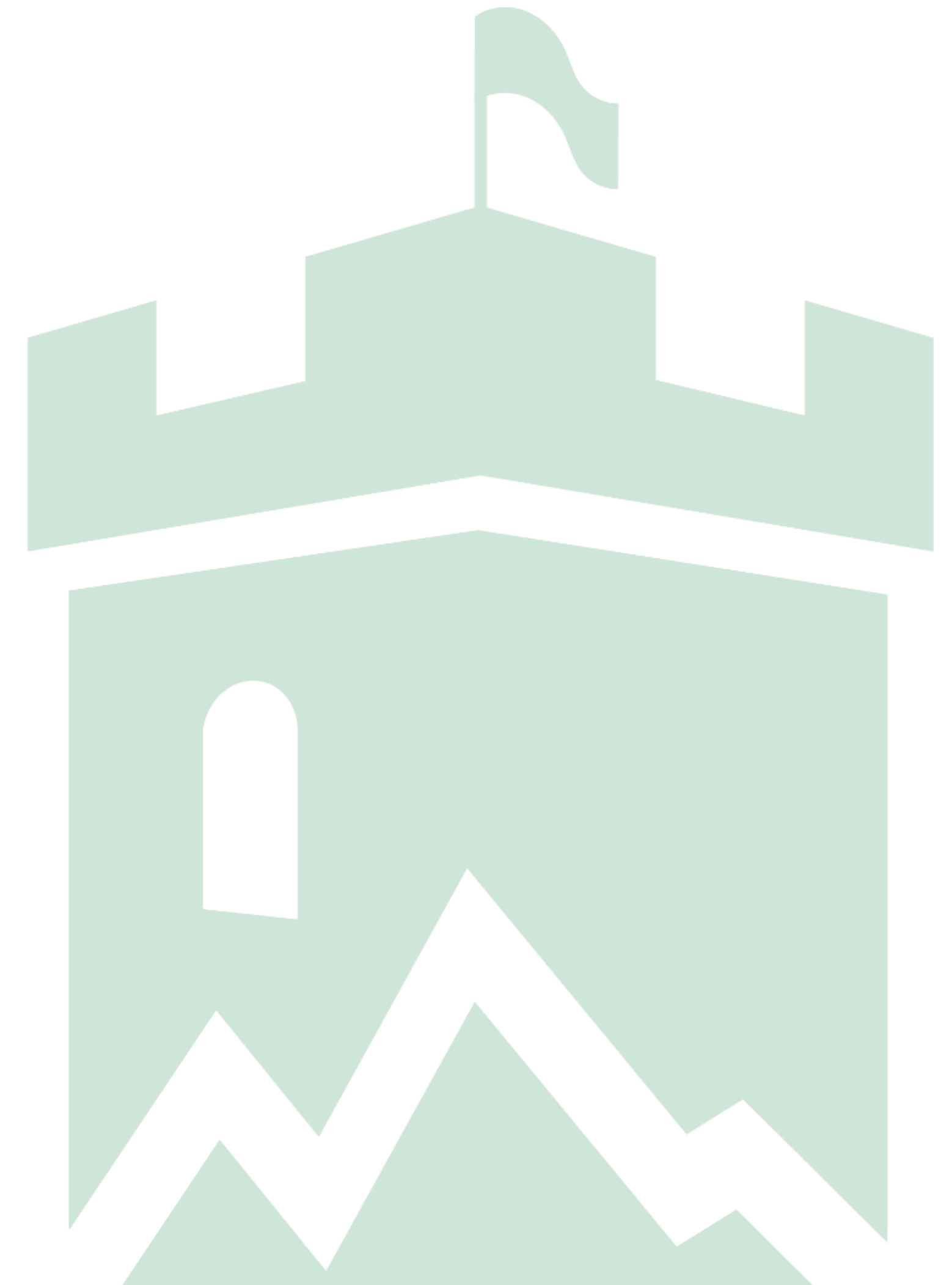
**PUPIL CENTRED, POSITIVE AND PROFESSIONAL**



# SAMPLE TIMETABLE



	MONDAY	TUESDAY	WEDNESDAY	THURSDAY	FRIDAY
AM	MENTORING BMI BY16	MENTORING BMI BY16	MENTORING BMI BY16	MENTORING BMI BY16	MENTORING BMI BY16
1	MATHS PCG BY06	MATHS PCG BY06	GEORGRAPHY RHO RE18	FRENCH GVE BY30	CORE PE SBR
2	GEORGRAPHY RHO RE18	MATHS PCG BY06	MATHS PCG BY06	ENGLISH KEM HH03	CORE PE SBR
3	DRAMA BMI BY16	MUSIC MSC BY17	CREATIVE ROTATION CKI DM07	SCIENCE RDI DE04	SCIENCE RDI DE04
4	FRENCH GVE BY30	RELIGIOUS EDUCATION CCO RE11	CREATIVE ROTATION CKI DM07	SCIENCE RDI DE04	SCIENCE RDI DE04
5	ENGLISH KEM HH03	ENGLISH KEM HH03	FRENCH GVE BY30	HISTORY RHO RE18	COMPUTING MPO BY12
6	ENGLISH KEM HH03	ENGLISH KEM HH03	SCIENCE RDI DE04	HISTORY RHO RE18	MATHS PCG BY06





# GETTING TO SCHOOL



**Walking To School**



**Cycling To School**



**Travelling By Car**



**Passenger Travel Solutions  
Independent Bus**

<https://www.passengertravelsolutions.co.uk/home>

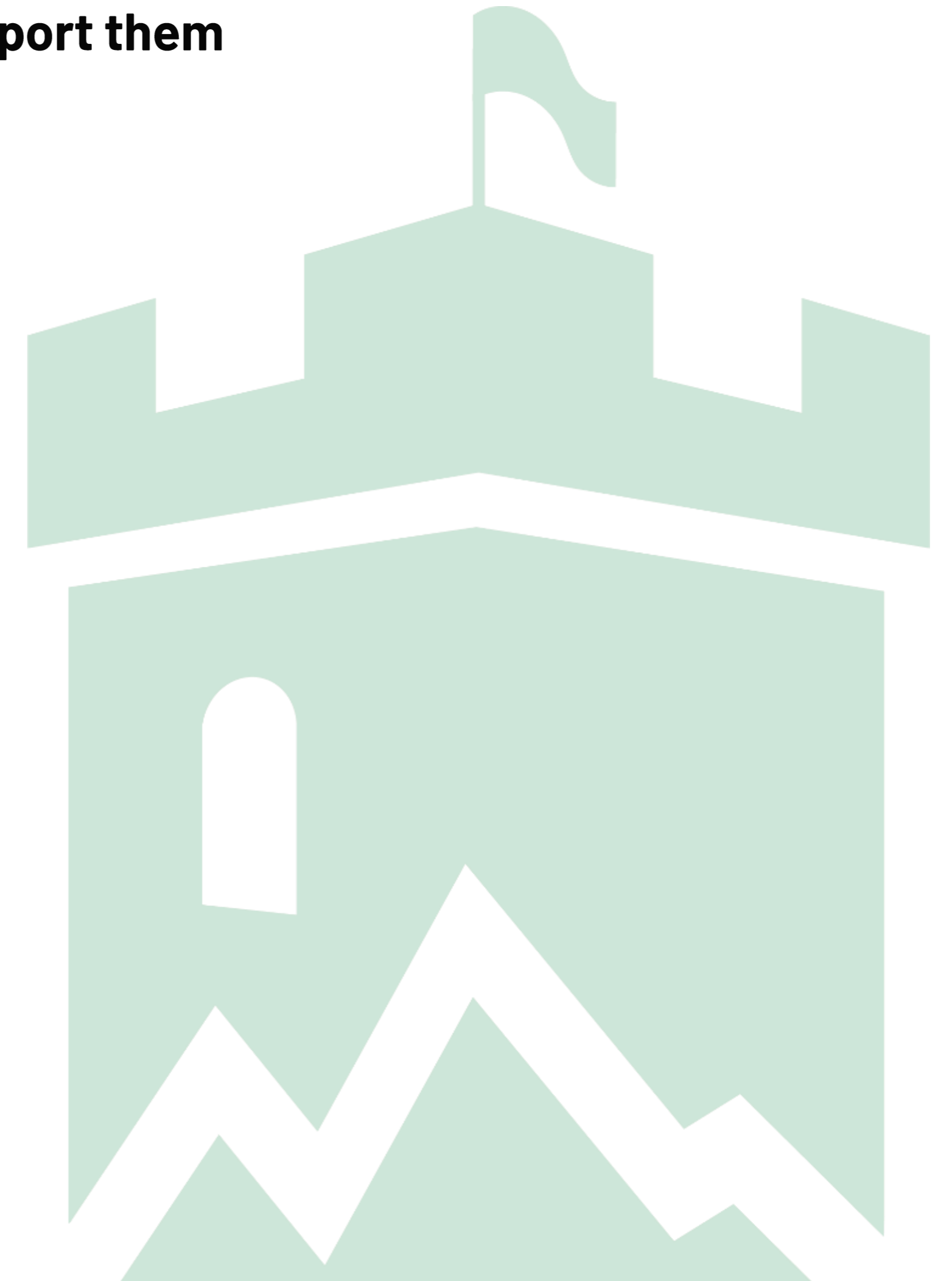
# MEET THE TEAM - SEND



Miss Bowles  
SEND  
Coordinator

## What students recognise that our staff do to support them in every lesson:

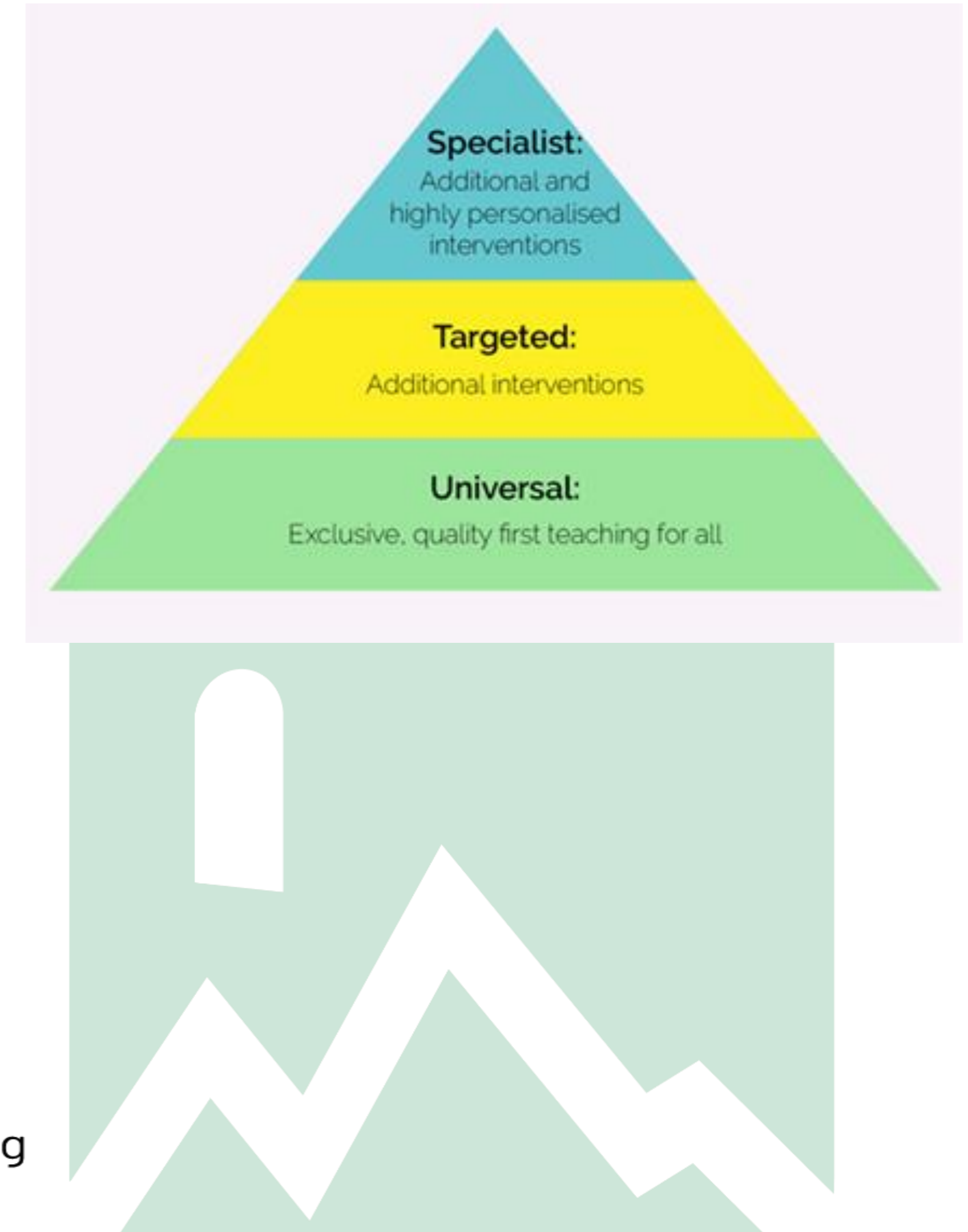
- Retrieval tasks (do now)
- Sentence starters
- Suggestions/hints/tips
- Discussing success criteria
- Modelling answers/paragraphs
- Mini whiteboards
- I do, we do, you do activities
- Glossary and key vocabulary work
- 'Talk to your shoulder partner'
- Re-wording tasks
- Prompting with instructions/examples
- Staff working 1:1 with students
- Use of visualiser
- Breaking down tasks
- Reciprocal Reading



# SEND PROVISION



Universal Provision	Targeted Provision	Specialist Provision
SEND Learning Club <b>Quality First Teaching</b> Reasonable Adjustments Student passport - Beehive	<u>Academic interventions</u> <b>Literacy</b> 'That Reading Thing' Direct Instruction Reciprocal Reading Fresh Start  <b>Numeracy</b> Direct Instruction Doodle <u>Holistic interventions</u> Break-Out Room ELSA Flourish On-site alternative provisions	Students with EHCPs/Intervention Funding.



“Leaders make sure that teachers know how to support pupils with special educational needs and/or disabilities. Teachers use this advice to adapt teaching to meet pupils’ needs. Year 7 and Year 8 pupils who need help to catch up in reading and mathematics get exceptional support.” **Ofsted, May 2023**



# MEET THE TEAM - WELL-BEING



- Our students' mental wellbeing is especially important to us. Positive mental wellbeing can influence the way in which a student learns and copes with key life events.
- Students who are experiencing emotional or mental health changes are offered support from our Mental Health and Wellbeing Team.



## **Jo Wilton**

Counsellor & Supervisor -  
MBACP

(Registered with the British  
Association of Counsellors  
and Psychotherapists)



# OUTSIDE AGENCIES – SUPPORTING STUDENTS WELLBEING



**Becky Ward**

Educational Mental Health  
Practitioner  
NHS



**Sam Harris**

Young People's Health and  
Wellbeing Officer  
Teen Health 11+ Services

Collectively, our Mental Health and Wellbeing Team are able to:

- Promote positive mental health
- Identify need
- Provide early intervention on issues such as anxiety, low self esteem and low mood
- Refer to and commission external agencies



# BREAKFAST AND TWILIGHT CLUB



- Breakfast club 8.15am
  - Free breakfast
  - Opportunities to buy drinks



- Twilight club 3.00pm-4.15pm
  - Help with homework
  - Quiet indoor space



# DINING



- Wide variety of food and drinks available to purchase breaktime and lunch time
- Cashless catering system
- Year 7/8 canteen, with a year 7 zone



**PUPIL CENTRED, POSITIVE AND PROFESSIONAL**



# REWARD SYSTEM



## **100 reward points**

- Bronze reward badge, email home to parents / carers

## **200 reward points**

- Silver reward badge, email home to parents / carers

## **300 reward points**

- Gold reward badge, email home to parents / carers

## **400 reward points**

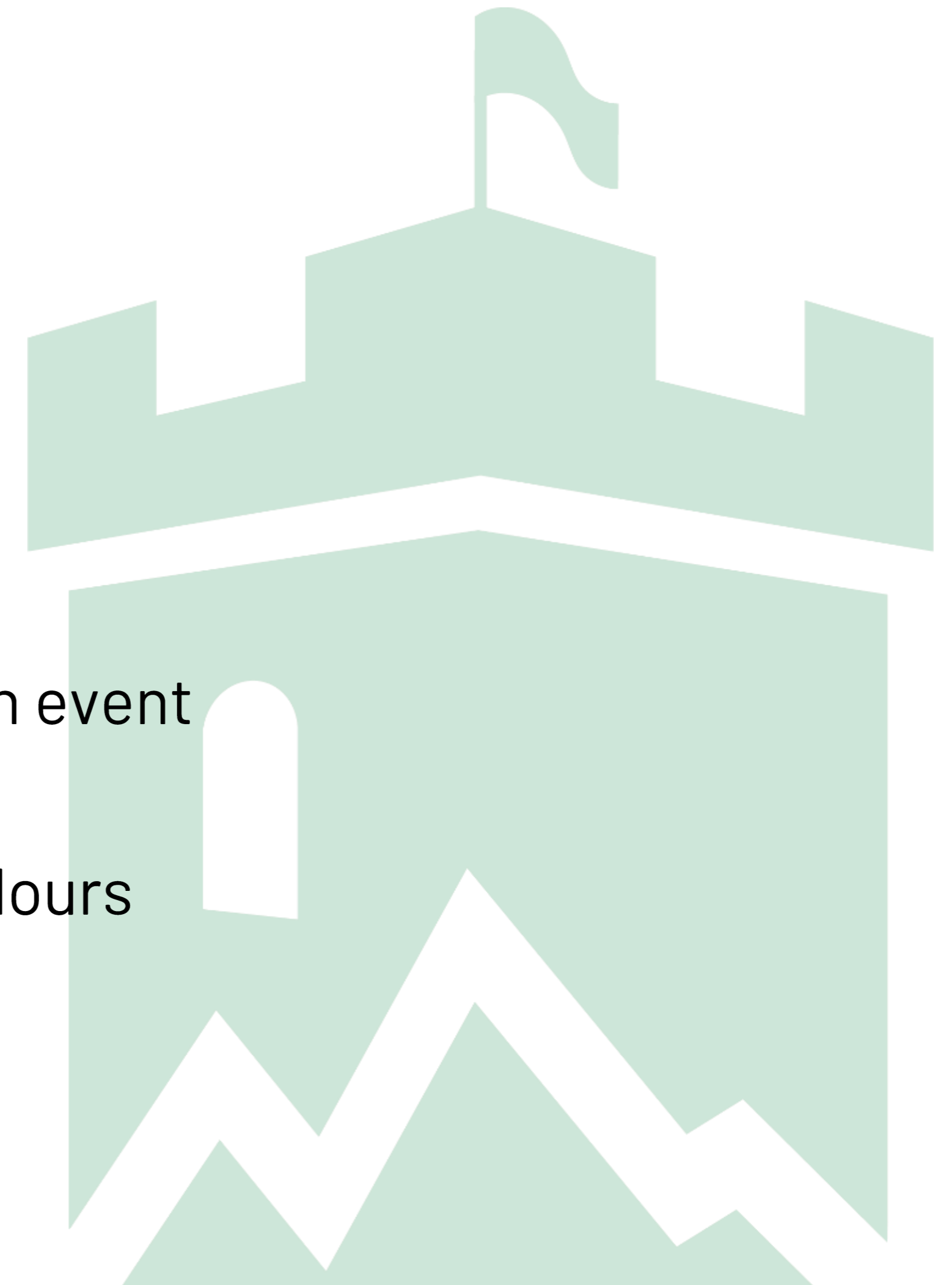
- Platinum reward badge and an invite to our end of year celebration event

- 50 reward points in English, Maths or Science earns you Faculty Colours

- 100% Attendance badges and certificates for each half term

- Rewards Trips & our end of year celebration trips to a theme park

- Rewards assemblies every half-term





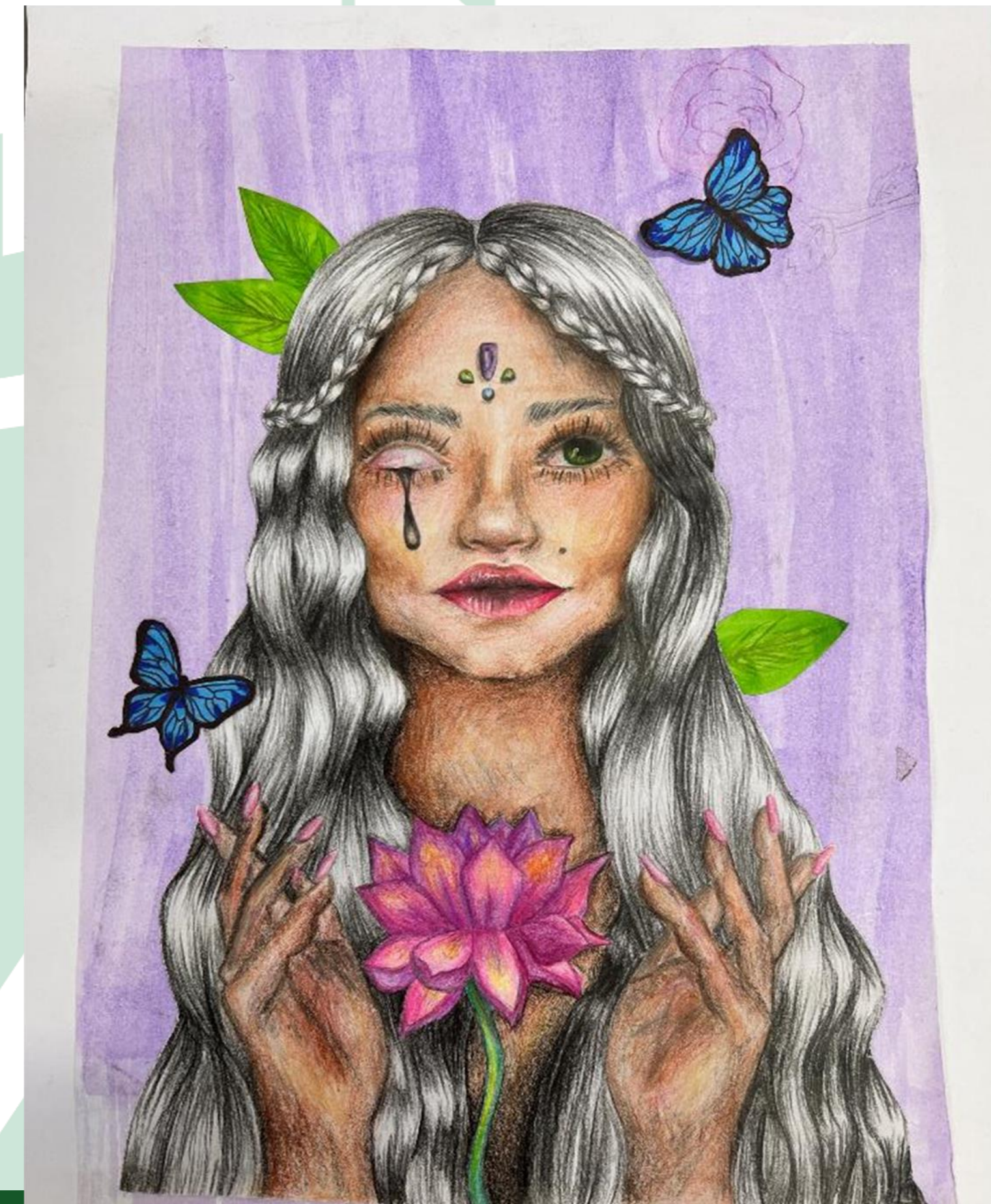
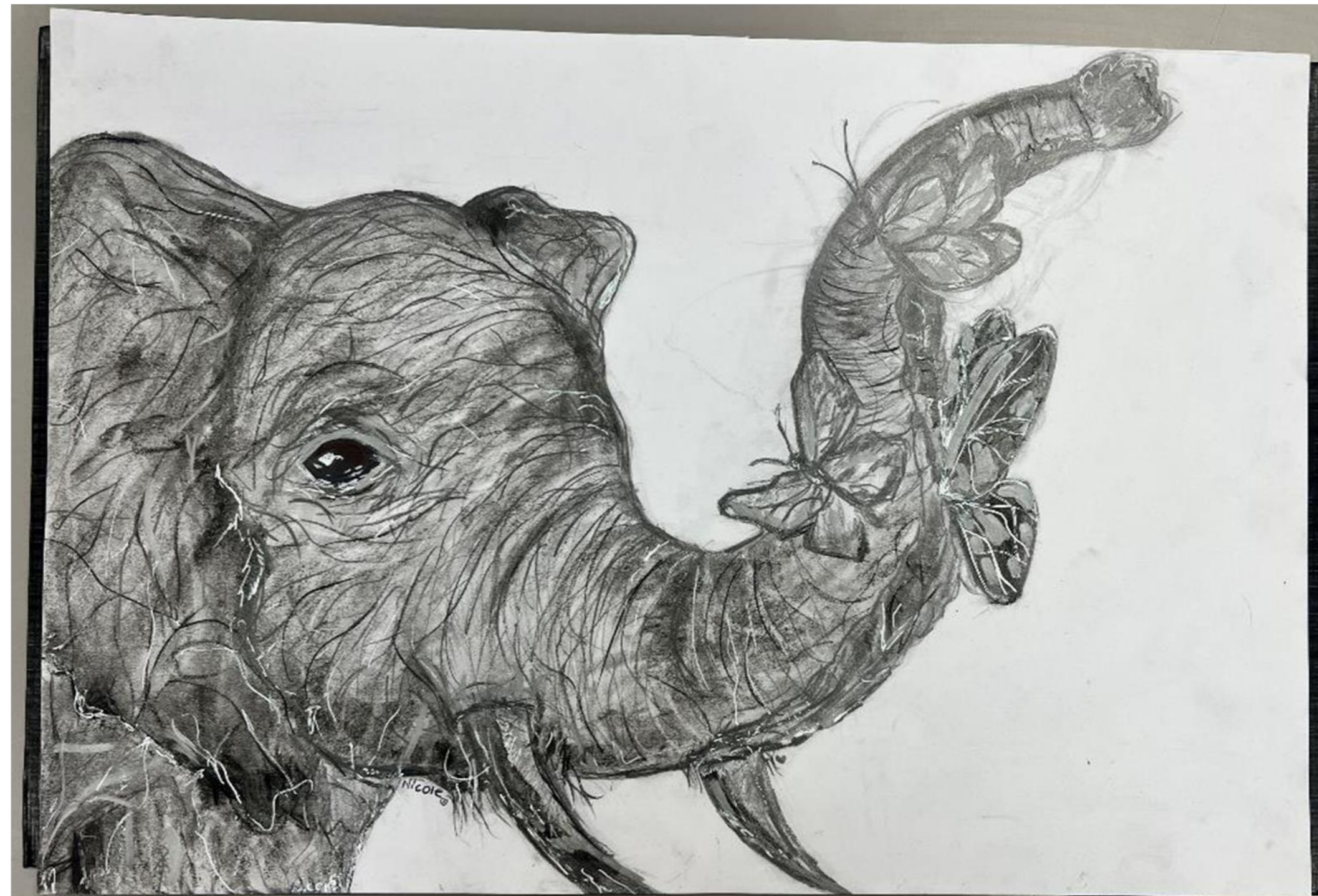
# MUSIC AND PERFORMING ARTS



**PUPIL CENTRED, POSITIVE AND PROFESSIONAL**



# ART AND DESIGN



PUPIL CENTRED, POSITIVE AND PROFESSIONAL



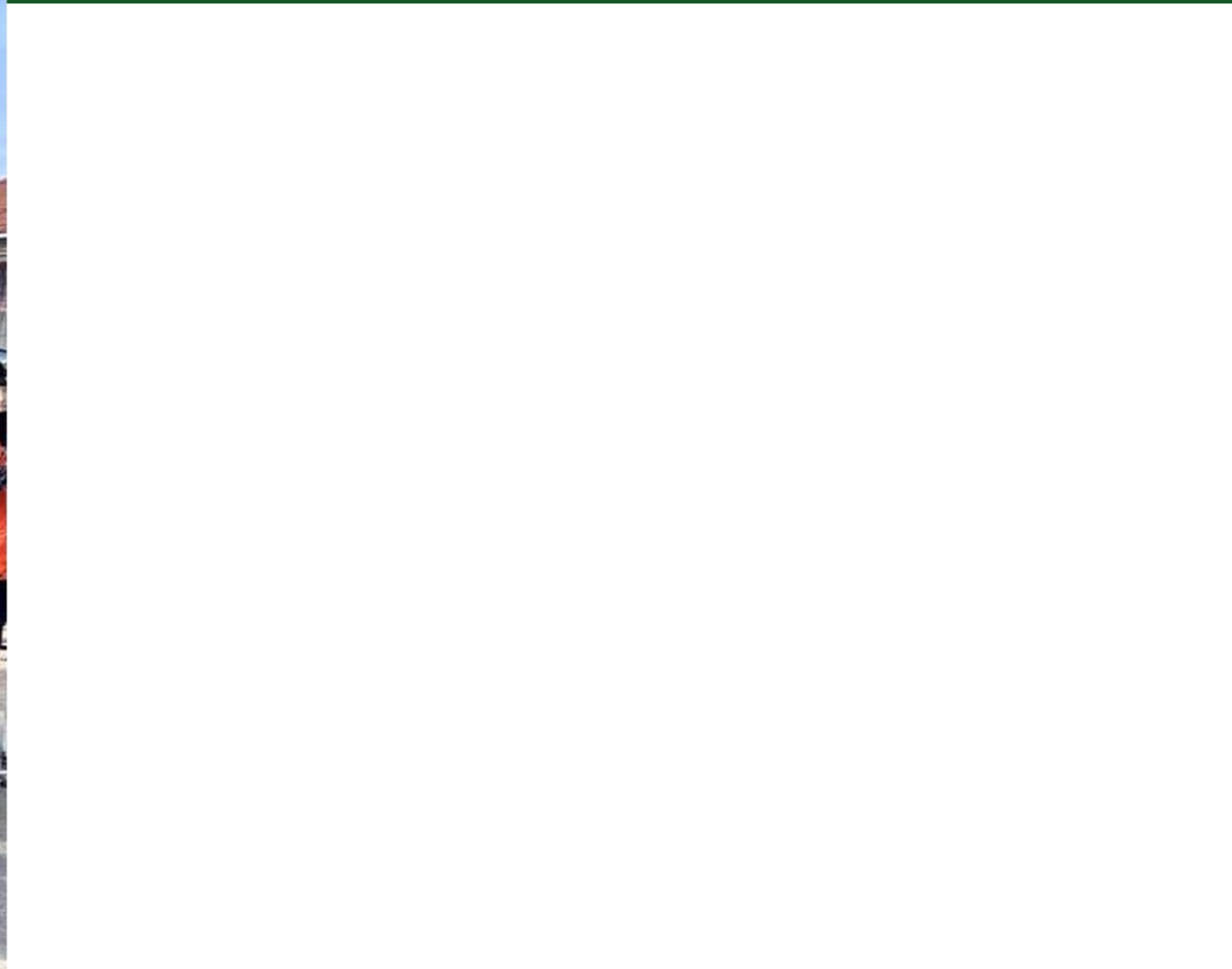
# SPORTS



**PUPIL CENTRED, POSITIVE AND PROFESSIONAL**



# TRIPS





# KEY DATES



- ✓ 1<sup>st</sup> March – National offer day
- ✓ 7<sup>th</sup> March – Year 6 welcome evening
- 15<sup>th</sup> May – Year 6 SEND Information Evening – Welcome talk from our SENDCo (Mrs Bowles) and a chance to book individual appointments
- Enhanced transition (General, SEND and Wellbeing) – Invite only.
  - Wednesday 12<sup>th</sup> June 2024
  - Wednesday 19<sup>th</sup> June 2024
  - Wednesday 26<sup>th</sup> June 2024
- 13<sup>th</sup> June – Year 6 registration evening (uniform try on, PE kit ordering, food tasting, photograph, trip payment, beehive tutorial and Pupil Premium stands)
- 2<sup>nd</sup> July – Meet the tutor evening and show performance
- 3<sup>rd</sup> and 4<sup>th</sup> July – Year 7 induction days
- Saturday 13<sup>th</sup> July – Uniform Pop Up Shop – Book your slot. Try on. Purchase. Take home with you that day! Saturday 20<sup>th</sup> July – Recommended last date for online orders for delivery before the start of school term.

# YEAR 7 TRIP



Proposed Date: Friday 6<sup>th</sup> September 2024

Beaumanor Hall

Team Building

More details to follow...







**"I was nervous at first but there are so many people you can talk to. My Head of Year, Pastoral Mentor, and form tutor are so helpful."**

**"I was worried about getting lost but all the staff are really kind and friendly and helped me. I am really settled now and don't even need my timetable."**



**"I love being at The Castle Rock School. The school dinners are amazing!"**

**"My biggest worry coming into Year 7 was not fitting in. When I came here, my biggest happiness was fitting in."**

